



ePipe™ 2344

Multi-link IP bandwidth aggregation gateway

increase the reliability, security and speed of connections by up to 3 times!

The ePipe 2344 is an intelligent multilink access device that sits between your existing infrastructure and the transport network to transform the reliability, security and bandwidth of your data network between each of your locations. Rather than limiting you to expensive, ill-fitting or inefficient services, The 2344 puts you in the driver's seat. It lets you use the data communication solution of your choice, using commonly available equipment and services to build a more affordable, flexible, reliable and secure network.

a more reliable connection

The 2344's advanced link management gives you the peace of mind that your network will keep transmitting, even if a link or network service fails. The 2344 aggregates multiple connections, instead of risking your entire network to a single fast connection. If a link fails, your data continues to flow over the remaining links. Because The 2344 utilizes all the circuits available, you enjoy all the bandwidth you purchase, instead of wasting money on redundant circuits that are idle most of the time.

The 2344 is provider transparent, allowing you to simultaneously network through two or more service providers and be protected in the event of a provider-wide failure. Even if all broadband services fail, The 2344 automatically switches to multiple backup PSTN or ISDN connections, giving you a bullet-proof network.

a more secure connection

The 2344 is fully compatible with your existing security suite. In addition, The 2344's ML-IP software enhances the security of your connections, by fragmenting packets across multiple links (and even multiple networks, if you wish).

Separate, isolated LAN segments (DMZ) can be established for hosting Web, email and e-commerce services, controlling access to these services from both the Internet and internal users.

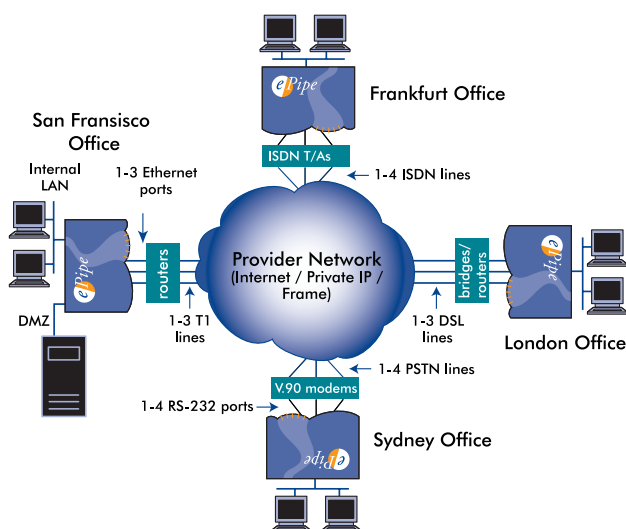
A faster, more flexible connection

The 2344 enables you to increase bandwidth to match your rapidly increasing networking needs, on demand. Simply add extra low-cost connections as needed to achieve a high speed link at a fraction of the cost of a single high speed connection. The 2344 lets you build the bandwidth you need by aggregating up to three xDSL, Cable, T1 or Frame Relay connections (or up to four PSTN, ISDN or wireless connections) into one faster connection. The 2344 achieves this transparently, without intervention by service providers.

The 2344 can aggregate connections through any IP-enabled network, including private IP, public IP (Internet), Frame Relay and ATM networks. This allows organizations with multiple locations to deliver scalable broadband data services to every site today, regardless of the services that are locally available.

faster Internet access

The 2344 also load balances Internet traffic across multiple connections. It balances http, images, streaming audio, video, email, ftp and other Internet session traffic across all available connections. This enables everyone in the organization to enjoy faster Internet access.



The Total Solution

- ◆ Up to 3 times as reliable as a single connection
- ◆ Enhanced link security, assured compatibility
- ◆ Up to 3 times the speed of your current connection
- ◆ Works over any link type (DSL/T1/cable/dial)
- ◆ Compatible with private IP, public IP (Internet), Frame, ATM networks
- ◆ Load-balance Internet access (outbound requests)

Technical Specifications

Multilink IP Bandwidth Aggregation and Management

Protocols	TCP/IP, RIP, DHCP, TFTP, PPP, PPPoE
Bandwidth control (site-site)	Multilink IP (ML-IP) aggregates connections into a site to site tunnel
High availability	All active links aggregate data (no idle links) Automatic fallback to fewer broadband links for resiliency Broadband fail-over to up to 4 bonded dial backup links
Carrier access service	xDSL, Leased Line, or Cable (up to 3 links) ISDN, PSTN or wireless (up to 4 links)
Primary access ports	Supports three xDSL or leased line routers, xDSL bridges
Backup access ports	Supports four analog modems, ISDN TAs
Networks supported	Any IP-enabled network (private IP, public IP (Internet), Frame Relay, ATM)
Compatibility	Works with all CPE VPN and firewall solutions
Bandwidth control (Internet)	Load-balances Internet sessions over available links

Monitoring and Configuration

Configuration	Simple browser based tool
Monitoring	Discovery on local network; network and communications statistics; hardware status and diagnostics

Hardware

Network	IEEE 802.3 Ethernet Four 10/100Base-T Ethernet ports (one for trusted LAN)
Serial	Four RS-232 ports (RJ45) up to 230 Kbits/sec plus RS-232 console port (DB-9 male)
Power Supply	External PSU; 5 Volts @ 1.5 A
Dimensions	224mm x 152 mm x 45 mm
Mounting	Desktop or wall mount slots
Anti-theft	Kensington Security Slot
Indicators	LEDs for power, activity, network and serial I/O traffic
Environment	0–40 °C, rel. humidity 10–80% non-condensing
Approvals	FCC Class A, EN55022 Class A, EN55082-1, CE, C-Tick
Warranty	3 year limited warranty (return to manufacturer)
Accessories included	Cables (2 modem/2 Ethernet/1 console); loopback, powerpack

Model

ePipe 2344	Multilink IP access and security gateway
Dual DB25	Pack of two RJ45 to DB25 male modem cables
Quad DB25	Pack of four RJ45 to DB25 male modem cables

Description

The Americas (USA)

Tel: +1 1800 347-7722 (toll free)
Tel: +1 831 477 4345
Fax: +1 831 477 0444

Asia Pacific (Australia)

Tel: 1800 037 473 (toll free, Australia)
Tel: +61 7 3377 7242
Fax: +61 7 3377 7245

Internet

<http://www.ml-ip.com/epipe/>
info@ml-ip.com



ePipe The Leaders in Multilink IP